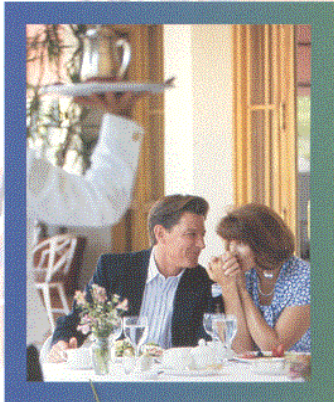
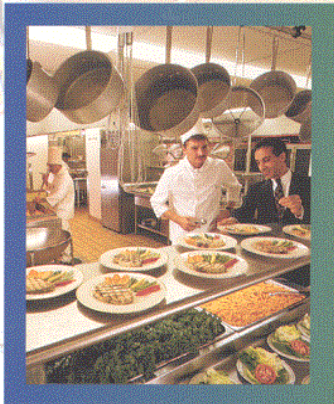
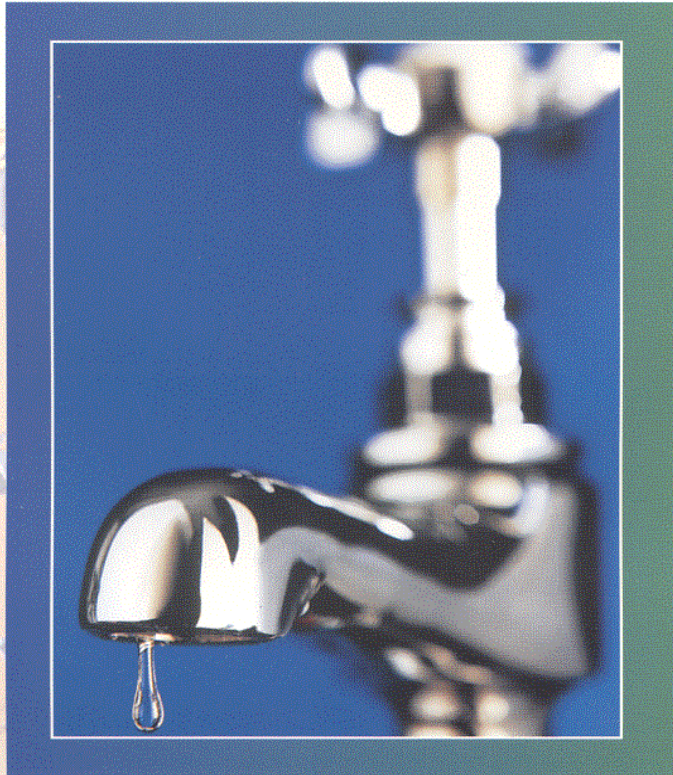
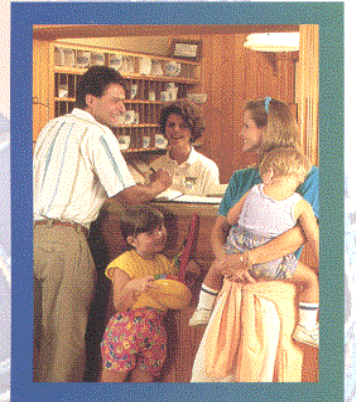


COMMERCIAL & INDUSTRIAL WATER TREATMENT

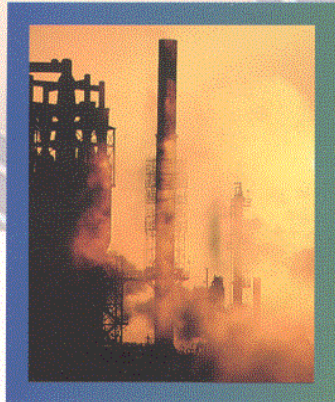
FOOD SERVICE



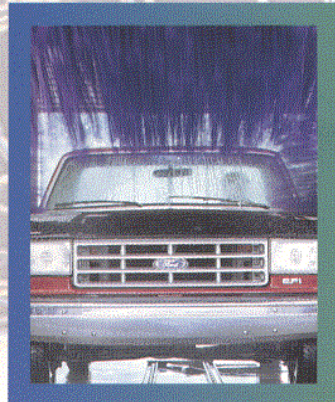
LODGING



INDUSTRY

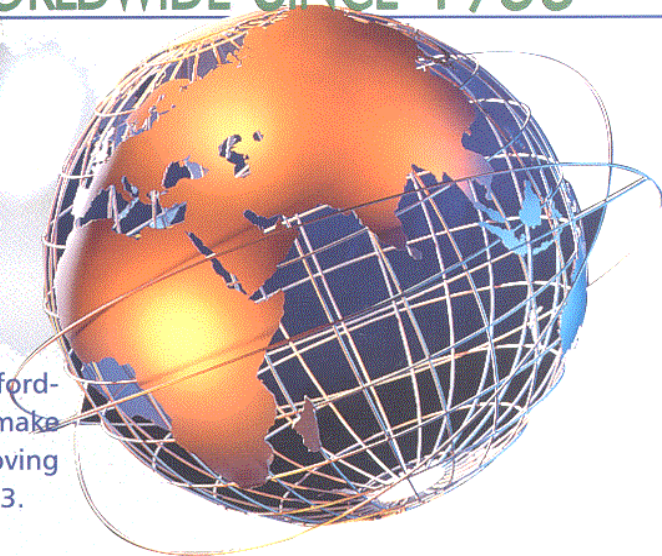


VEHICLE WASH



RAINSOFT®

PROVIDING QUALITY WATER WORLDWIDE SINCE 1953



Water is a Delicate Resource

With world-class products and affordable solutions, RainSoft™ helps make the world a better place by improving water across the globe since 1953.

RainSoft

Has Serious Solutions For Serious Problems



Hospitals, hotels, restaurants, schools, government agencies, beauty salons, vehicle washes and laundries prefer RainSoft for its solid reputation, proven results, exceptional warranties, quality service and engineering.

FOOD SERVICE

Count on RainSoft water for spot free wares and better tasting foods and beverages.



LODGING

From the laundry to the kitchen, hotels, motels and resorts depend on RainSoft water for reduced equipment maintenance and expenses while extending the life of their linens and providing added comfort for their guests.



APARTMENT COMPLEXES & CONDOMINIUMS

RainSoft equipment is perfect for those multi-family dwellings where owners and occupants reap all the benefits of conditioned water.



VEHICLE WASH

Vehicle wash applications require a continuous supply of water. RainSoft water can reduce chemical usage and can provide high quality water for a spot-free rinse.

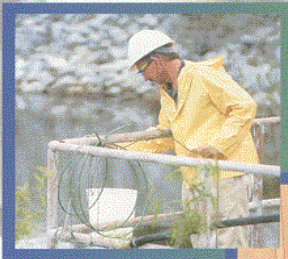
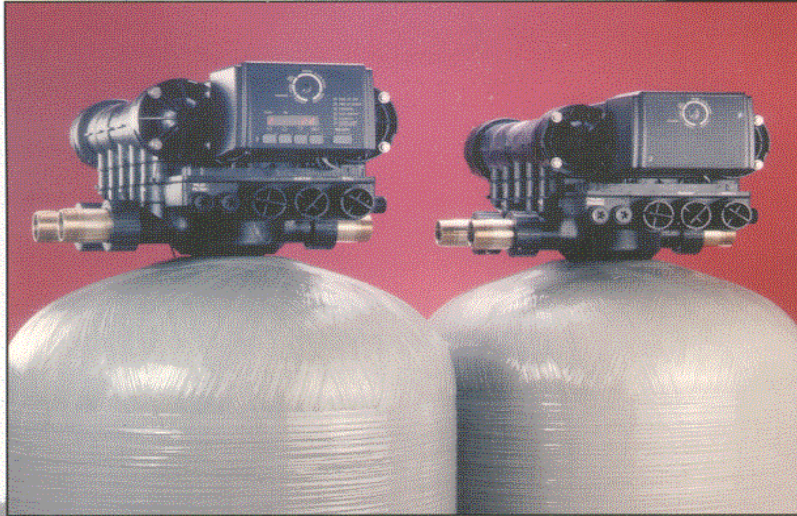
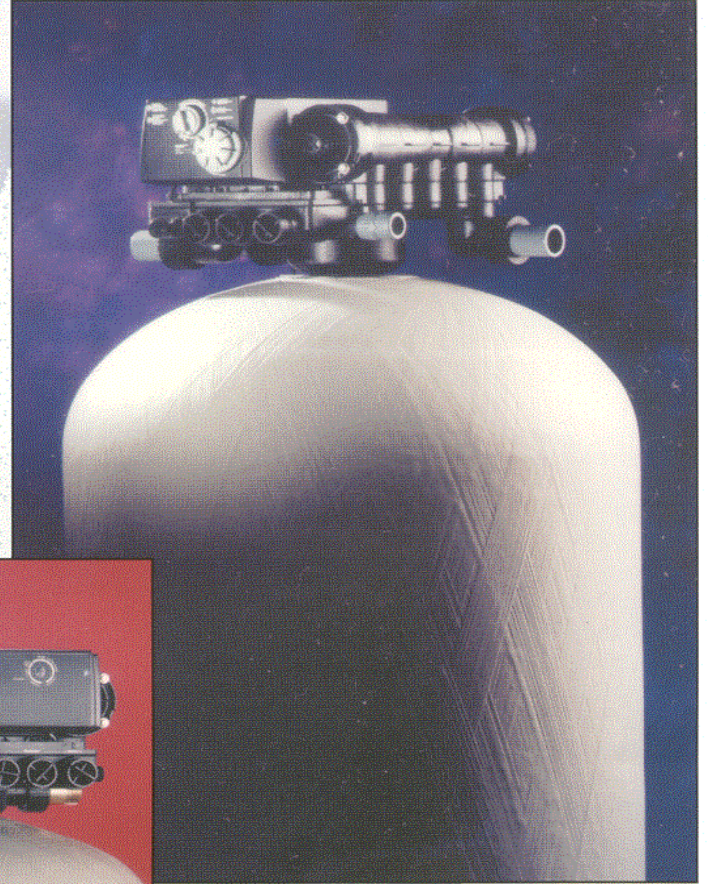
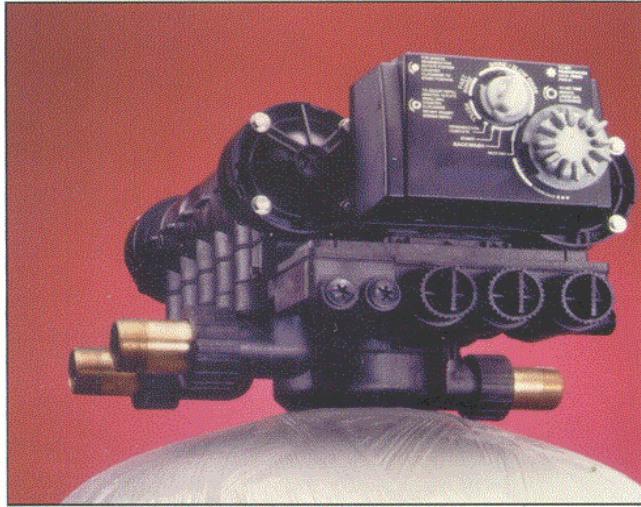


INDUSTRY

Today's high-tech industries demand high quality RainSoft water to meet their needs from boilers and cooling systems to water processed for manufacturing.



RAINSOFT TECHNOLOGY PROVIDING HIGH QUALITY WATER



TECHNOLOGY Serving The Twenty-First Century

Thousands of businesses and industries use RainSoft technology every day.

PRODUCT FEATURES & BENEFITS

MULTI-PORT HYDRAULIC VALVE:

- Corrosion resistant, durable, light weight composite construction
- Full inch and a half porting on all main flow paths
- Built-in hard water bypass or eliminate bypass during regeneration by simply adding a cartridge
- Self-Adjusting flow regulators provide uniform flow rates regardless of pressure
- Time-proven pilot cam technology
- Modular construction with all service parts contained within removable cartridges
- Easy to service-minimum of moving parts
- Standard brass coupling connectors

VERSATILE VALVE OPERATION WITH YOUR CHOICE OF EASY-TO-SET ELECTRONIC OR MECHANICAL CONTROLS:

- Electronic control applications utilize in-line turbine flow meter with accuracy of +/- 3%
- Electronic features include operating histories, peak flow operating data, average daily water usage, plus more
- Immediate or delayed regeneration with fixed or variable reserve capacity
- Multiple unit capabilities including Twin Alternating System Control
- Remote regeneration capabilities
- Auxiliary output signal for central monitoring
- Memory retention-no need to reprogram after a power outage. Only reset current time of day.
- U.S. or Metric units of measure

PRESSURE VESSEL:

- Non-corrosive reinforced fiberglass
- Meets seismic Zone 4 regulations
- Improved flow distribution through hub and lateral designed internals
- Durable, high efficiency softening resin with no color throw and excellent physical stability for long dependable life.
- Highest quality filtration medias

BRINE SYSTEM:

- Sturdy polyethylene brine tank
- Reliable brine safety valve incorporating two primary checks that prevent brine tank overflow.

FILTERS:

- Dechlorination, taste and odor removal by activated carbon
- Iron, manganese and hydrogen sulfide removal
- Turbidity and suspended matter reduction
- Neutralizing of low alkalinity acidic waters

ETL Listed
Conforms to
UL STD. 508
Certified to
CAN/CSA C22.2 No. 14



OPTIONAL FEATURES:

- ASME Code Pressure Vessels
- BSP or Metric Pipe Fittings - NPT is Standard
- High Performance Resin
- Chlorine-Resistant Resin

OPERATING LIMITS

Pressure 30-100 PSI (207-690 kPa)
Ambient Temperature
34 - 120°F (1 - 50°C)
Water Temperature
34 - 100°F (1 - 36°C)
Power Requirement 12 V, 50/60Hz, 3W

YOUR INDEPENDENT RAINSOFT DEALER

Castle Water
856 S. Washington St.
Greencastle, PA 17225
(800) 323-7321
(717) 597-4449
www.castlewater.com

Support Line: 800RAINSOFT